

# Xpress Flex<sup>®</sup> DR Panels

*The World's First Flexible Digital X-Ray Detectors!*



## **WRAP IT, DON'T STRAP IT!**

Xpress Flex DR Panel is changing the NDT market by offering the first flexible DR panel that can be wrapped around an object for optimal contact across the area of interest. The Xpress Flex will change your Digital Imaging experience by improving workflow and image quality, reducing your exclusion zone, and simplifying the process with less consumables than other methods.



# Xpress Flex<sup>®</sup> DR Panels

*The World's First Flexible Digital X-Ray Detectors*

Xpress Flex is the World's first flexible digital X-ray detector that can be contoured around an object for direct contact of the imaging area. Its hinged design allows the TFT detector to move freely while not impacting image quality or product durability. This flexibility means the detector can be shaped around more complex objects eliminating distortion that can come from using a flat DR panel.



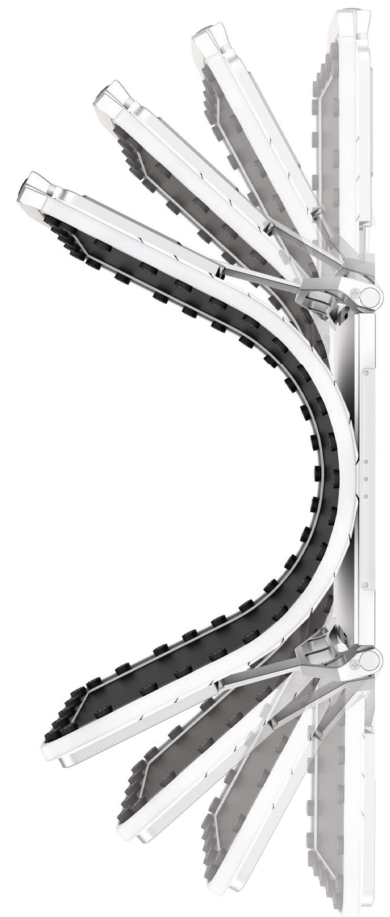
The Xpress Flex is lightweight which makes working with it in the field easy. The TFT detectors are rugged and sensitive enough to capture images using even low exposures. Isotopes with low curies (less than 30) still produce weld quality images on the Xpress Flex, allowing you to keep your sources longer and reduce the exclusion zones dramatically.

*"Amazing, we were able to do the required 7 shots of a 5 mile long 16" pipe in only 3 minutes!"*

*- Current Customer*

## BENEFITS

- Flexible detector that can be used on complex shaped objects
- Full contact on larger circumferences
- High sensitivity = lower exposure dose
- Smaller Radiation Exclusion Zones due to lower dose exposures
- Allows for extended use of low curie gamma sources
- Wireless communication (with optional tether included)
- Battery powered (batteries and charger included)
- Light weight compact design
- Easy to use XVu<sup>®</sup> software platform
- Sleep Mode for Low Power Consumption
- Ultra tough shock-proof composite material
- Pixel Pitch: 140  $\mu\text{m}$  or 100  $\mu\text{m}$  based on model
- No Film or Chemicals



# DISTORTION OF FLAT DDA @ PIPE INSPECTION

Distortion Area

Flat panel detector

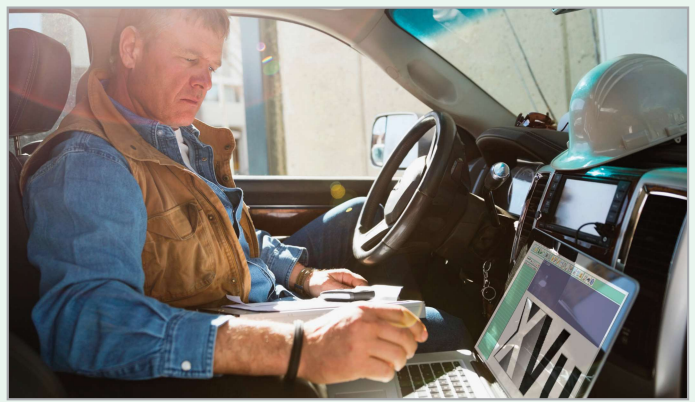
FleX Series

Narrow Active Area

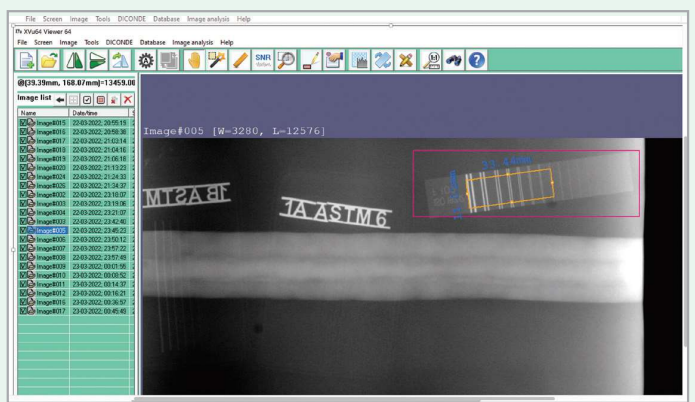
Wide Active Area

## XVu SOFTWARE

XVu Software is used in conjunction with the Xpress Flex system. XVu allows for exposure control, image processing and archiving. X-Ray images are stored in DICONDE tamper-proof data format that meets or exceeds requirements of ISO, ASTM, API and ASME.



The software provides stitching of images, compatibility with conventional image formats such as .jpg and .tiff, with image enhancement, as well as image specific information such as inspection date and time all stored in the datafile. All of this provides the perfect conditions for image examination and inspection protocol preparation.

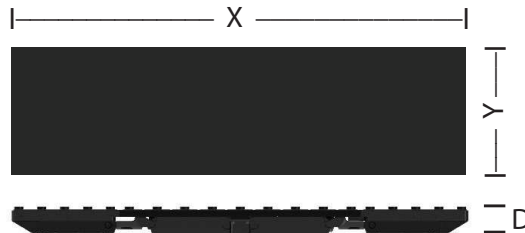


Sample Screen



## GENERAL SPECIFICATIONS

	<b>1043</b>	<b>1036</b>	<b>1024</b>
<b>Size (in)</b>	4" x 17"	4" x 14"	4" x 10"
<b>Imaging Area (mm<sup>2</sup>)</b>	100 x 430	107 x 358	100 x 240
<b>Bending Range</b>	8 inch to Flat	8 inch to Flat	4 inch to Flat
<b>Housing Material</b>	Aluminum & Silicon/Rubber	Aluminum & Silicon/Rubber	Aluminum & Silicon/Rubber
<b>Sensor Protective Material</b>	Carbon Fiber	Carbon Fiber	Carbon Fiber
<b>Technology</b>	a-Si TFT with photodiode	a-Si TFT with photodiode	a-Si TFT with photodiode
<b>Scintillator</b>	Gd2O2S:Tb (Gadox)	Gd2O2S:Tb (Gadox)	Gd2O2S:Tb (Gadox)
<b>Pixel Matrix Resolution</b>	1024 x 4300	768 x 2560	1024 x 2406
<b>Pixel Pitch (µm)</b>	100 µm	140 µm	100 µm
<b>Spatial Resolution (lp/mm)</b>	5	5	5
<b>AD Conversion (bit)</b>	16 Bit	16 bit	16 Bit
<b>Wireless Protocol</b>	1GigE 802.11 n/ac	1GigE 802.11 n/ac	1GigE 802.11 n/ac
<b>Operating Temp (oC)</b>	-20 to + 50	-20 to + 50	-20 to + 50
<b>Storage &amp; Transport Temp (oC)</b>	-20 to +55	-20 to +55	-20 to +55
<b>Relative Humidity</b>	10 - 90%	10 - 90%	10 - 90%
<b>Operating/Storage Humidity</b>	10 - 90%	10 - 90%	10 - 90%
<b>Battery Type</b>	Li-ion (portable)	Li-ion	Li-ion (portable)
<b>Weight (less battery) (Kg)</b>	1.8	2.6	1.4



### Panel Dimensions (mm)

	Length	Width	Depth
Panel Size	"X"	"Y"	"D"
1024	330	160	35
1036	570	160	50
1043	525	160	29

## CONTACT US

For more information contact one of our offices.

321 North 8th Street,  
La Porte, TX 77571 USA  
Phone: +1 282-470-2010  
Fax +1 281-470-2024  
www.3Endt.com

14320 Wicks Boulevard,  
Charles Bollinger  
San Leandro, CA 94577 USA  
Phone: +1 510-352-6767  
Fax: +1 510-352-6772  
www.3Endt.com

Via Roganti 16 23020  
Prosto di Piuro SO Italy  
Silvano Succetti  
Phone: +39 034-326-3626  
Email: info@3Endt.eu  
www.3Endt.eu

### Satellite Offices

Salt Lake City, UT USA  
Charles Bollinger  
charlesb@ir100.com  
Phone: +1 282-470-2010  
Fax +1 281-470-2024  
www.3Endt.com

Tampa, FL USA  
Paul Biver  
Paul@3Endt.com  
Phone: +1 282-470-2010  
Fax +1 281-470-2024  
www.3Endt.com

