



3EXDS1723 and 3EXDS2532

OUR NEW GENERATION OF 75 and 124 μm PANELS

AFFORDABLE RELIABLE FULLY INTEGRATED WITH OUR XVu SOFTWARE

Specifications

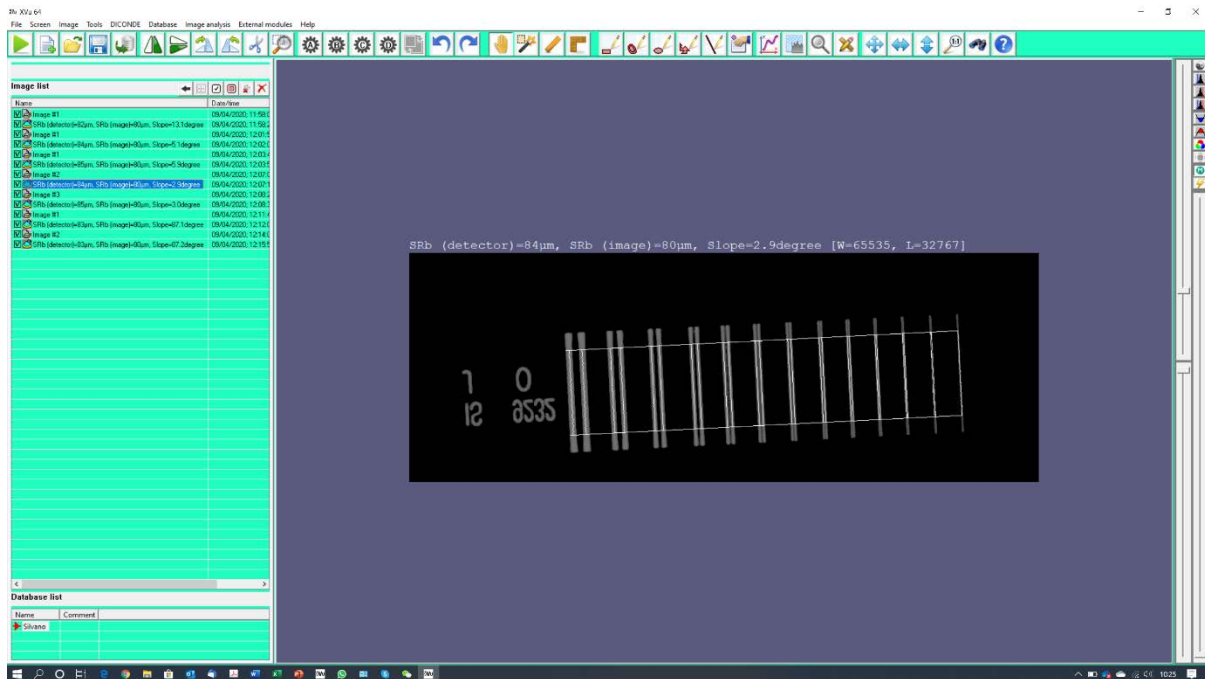


Model Name	VXTD-1723CAW /1723CBW /1723CCW	VXTD-2532CAW /2532CBW /2532CCW
Technology	a-Si TFT	a-Si TFT
Scintillator	CsI / Gadox	CsI / Gadox
Pixel Pitch	75 μm	124 μm
Pixel Matrix	2304 x 3072 pixels	2048 x 2560 pixels
Image Size	172.8 mm \times 230.4 mm	253.95 mm \times 317.44 mm
Grayscale	16 bits	16 bits
X-ray Voltage Range	40 kVp - 150 kVp 1723CCW: 40 kVp - 450 kVp	40 kVp - 150 kVp 2532CCW: 40 kVp - 450 kVp
Maximum Exposure Time	180 s	180 s
X-ray Generator Interface	DR Trigger Mode / AED Mode	DR Trigger Mode / AED Mode
Data Interface	PoE Gigabit Ethernet IEEE 802.11n / ac	PoE Gigabit Ethernet IEEE 802.11n / ac
Image Acquisition Time	Wired : 1.5 s Wireless: 3 s	Wired : 1.5 s Wireless: 3 s
Dimensions	208.2 mm \times 256.5 mm \times 27.5 mm	322 mm \times 355 mm \times 17 mm
Weight	2.0 kg 1723CCW: 2.4 kg(additional shield)	3.4 kg 2532CCW: 2.4 kg(additional shield)

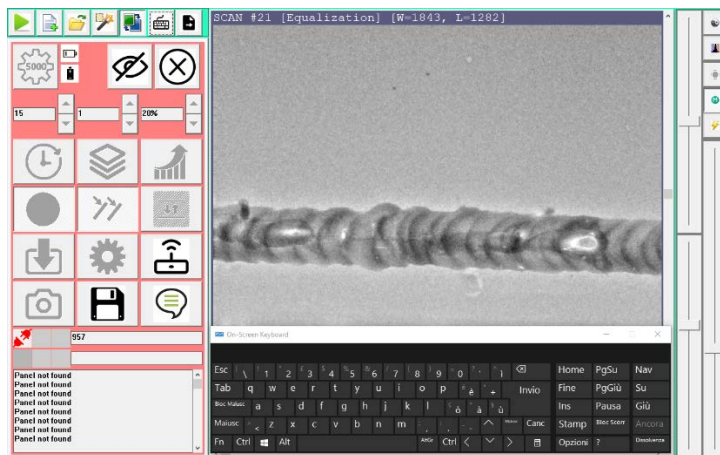


Operating Environment	-20°C to +50°C	-20°C to +50°C
	30 % to 85 % RH(non-condensing)	30 % to 85 % RH(non-condensing)
Battery	8 h(capturing)	8 h(capturing)
	9 h(standby)	9 h(standby)
Dust and Water Resistant	IP67	IP67
Bezel Size	Bottom: 3.0 mm	8.5 mm, two sides
	Right : 6.0 mm	
Power Consumption	DC 24 V, 0.8 A	DC 24 V, 0.8 A

Fully integrated with XVu Diconde compliant Software



and the new tablet versions



* Specifications are subject to change without prior notice.